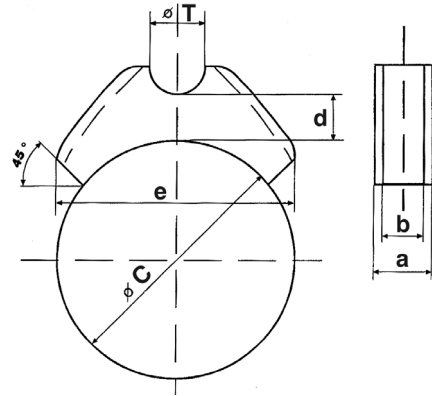


Supporto tra tubo e cilindro

Pipe clamp for cylinder

materiale - material: **PVC**

Δ Shore = **60°C - 284°F**



gruppo - group	codice code	Ø cilindro C - Ø cylinder C		Ø tubo T - Ø tube T		dimensioni in mm dimensions in mm			
		mm	inc. O.D.	mm	inc. O.D.	a	b	d	e
1	STF 12/50-70	50 ÷ 70	1,96 ÷ 2,75	12	0,47	23	14	12	72
	STF 12/60-80	60 ÷ 80	2,36 ÷ 3,15						
	STF 12/70-90	70 ÷ 90	2,75 ÷ 3,54						
	STF 12/80-100	80 ÷ 100	3,15 ÷ 3,94						
	STF 12/90-110	90 ÷ 110	3,54 ÷ 4,33						
	STF 12/100-120	100 ÷ 120	3,94 ÷ 4,72						
	STF 12/110-130	110 ÷ 130	4,33 ÷ 5,12						
	STF 12/125-150	125 ÷ 150	4,92 ÷ 5,90						
	STF 12/145-170	145 ÷ 170	5,71 ÷ 6,69						
	STF 12/165-200	165 ÷ 200	6,49 ÷ 7,87						
2	STF 20/50-70	50 ÷ 70	1,96 ÷ 2,75	20	0,78	23	14	12	72
	STF 20/60-80	60 ÷ 80	2,36 ÷ 3,15						
	STF 20/70-90	70 ÷ 90	2,75 ÷ 3,54						
	STF 20/80-100	80 ÷ 100	3,15 ÷ 3,94						
	STF 20/90-110	90 ÷ 110	3,54 ÷ 4,33						
	STF 20/100-120	100 ÷ 120	3,94 ÷ 4,72						
	STF 20/110-130	110 ÷ 130	4,33 ÷ 5,12						
	STF 20/125-150	125 ÷ 150	4,92 ÷ 5,90						
	STF 20/145-170	145 ÷ 170	5,71 ÷ 6,69						
	STF 20/165-200	165 ÷ 200	6,49 ÷ 7,87						
3	STF 25/50-70	50 ÷ 70	1,96 ÷ 2,75	25	0,98	23	14	12	72
	STF 25/60-80	60 ÷ 80	2,36 ÷ 3,15						
	STF 25/70-90	70 ÷ 90	2,75 ÷ 3,54						
	STF 25/80-100	80 ÷ 100	3,15 ÷ 3,94						
	STF 25/90-110	90 ÷ 110	3,54 ÷ 4,33						
	STF 25/100-120	100 ÷ 120	3,94 ÷ 4,72						
	STF 25/110-130	110 ÷ 130	4,33 ÷ 5,12						
	STF 25/125-150	125 ÷ 150	4,92 ÷ 5,90						
	STF 25/145-170	145 ÷ 170	5,71 ÷ 6,69						
	STF 25/165-200	165 ÷ 200	6,49 ÷ 7,87						

Applicazioni: Oleodinamica e pneumatica - Macchine utensili - Macchine movimento terra - Macchine agricole - Industria meccanica - Industria in generale - ecc.

Applications: oleodynamic and pneumatic - Machines tools - Earth-moving machines - Farm machines - Mechanical and metallurgical industry - Oil industry - and so on.