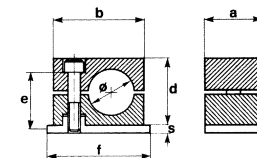


**Collari serie standard
in polipropilene,
poliammide autoestinguente,
gomma o alluminio**

**Standard clamps
in polypropylene,
self-extinguishing polyamide,
rubber or aluminium**

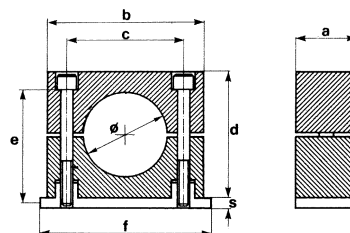
gruppo
group

0



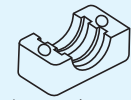
gruppo
group

1÷6

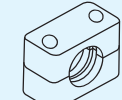


gruppo - group	diametro tubo pipe diameter			tipo di collare clamp type				dimensioni in mm dimension in mm						pezzi per confezione box quantity	
	Ø mm	pollici / inches G	Ø O.D.	A polipropilene polypropylene	MA polyamide self-extinguishing	RA gomma rubber	LA alluminio aluminium	a	b	c	d	f	s		e
0	6			A ₀ 06	MA ₀ 06	—	—	30	28	—	27	31,5	3	M6x20	50
	8		5/16"	A ₀ 08	MA ₀ 08	—	—								
	10	1/8"		A ₀ 10	MA ₀ 10	—	—								
	12			A ₀ 12	MA ₀ 12	—	—								
1	6			A ₁ 06	MA ₁ 06	RA ₁ 06	LA ₁ 06	30	34	20	27	41	3	M6x20	50
	6,4		1/4"	A ₁ 6,4	MA ₁ 6,4	RA ₁ 6,4	LA ₁ 6,4								
	8		5/16"	A ₁ 08	MA ₁ 08	RA ₁ 08	LA ₁ 08								
	9,5		3/8"	A ₁ 9,5	MA ₁ 9,5	RA ₁ 9,5	LA ₁ 9,5								
	10	1/8"		A ₁ 10	MA ₁ 10	RA ₁ 10	LA ₁ 10								
2	12,7		1/2"	A ₂ 12,7	MA ₂ 12,7	RA ₂ 12,7	LA ₂ 12,7	30	40	26	33	46	3	M6x25	50
	13,5	1/4"		A ₂ 1/4"	MA ₂ 1/4"	RA ₂ 1/4"	LA ₂ 1/4"								
	14			A ₂ 14	MA ₂ 14	RA ₂ 14	LA ₂ 14								
	15			A ₂ 15	MA ₂ 15	RA ₂ 15	LA ₂ 15								
	16		5/8"	A ₂ 16	MA ₂ 16	RA ₂ 16	LA ₂ 16								
	17,2	3/8"		A ₂ 3/8"	MA ₂ 3/8"	RA ₂ 3/8"	LA ₂ 3/8"								
	18			A ₂ 18	MA ₂ 18	RA ₂ 18	LA ₂ 18								
3	19		3/4"	A ₃ 19	MA ₃ 19	RA ₃ 19	LA ₃ 19	30	48	33	35	54	3	M6x30	50
	20			A ₃ 20	MA ₃ 20	RA ₃ 20	LA ₃ 20								
	21,3	1/2"		A ₃ 1/2"	MA ₃ 1/2"	RA ₃ 1/2"	LA ₃ 1/2"								
	22		7/8"	A ₃ 22	MA ₃ 22	RA ₃ 22	LA ₃ 22								
	25			A ₃ 25	MA ₃ 25	RA ₃ 25	LA ₃ 25								
4	25,4	1"		A ₃ 25,4	MA ₃ 25,4	RA ₃ 25,4	LA ₃ 25,4	30	57	40	42	61	3	M6x35	25
	26,9	3/4"		A ₄ 3/4"	MA ₄ 3/4"	RA ₄ 3/4"	LA ₄ 3/4"								
	28			A ₄ 28	MA ₄ 28	RA ₄ 28	LA ₄ 28								
	30			A ₄ 30	MA ₄ 30	RA ₄ 30	LA ₄ 30								
5	32		1 1/4"	A ₄ 32	MA ₄ 32	RA ₄ 32	LA ₄ 32	30	68	52	58	73	3	M6x50	25
	32		1 1/4"	A ₅ 32	MA ₅ 32	RA ₅ 32	LA ₅ 32								
	33,7	1"		A ₅ 1"	MA ₅ 1"	RA ₅ 1"	LA ₅ 1"								
	35			A ₅ 35	MA ₅ 35	RA ₅ 35	LA ₅ 35								
	38		1 1/2"	A ₅ 38	MA ₅ 38	RA ₅ 38	LA ₅ 38								
	40			A ₅ 40	MA ₅ 40	RA ₅ 40	LA ₅ 40								
6	42			A ₅ 42	MA ₅ 42	RA ₅ 42	LA ₅ 42	30	86	66	66	89	3	M6x60	25
	42,4	1 1/4"		A ₅ 1 1/4"	MA ₅ 1 1/4"	RA ₅ 1 1/4"	LA ₅ 1 1/4"								
	45			A ₅ 45	MA ₅ 45	RA ₅ 45	LA ₅ 45								
6	44,5		1 3/4"	A ₆ 44,5	MA ₆ 44,5	RA ₆ 44,5	LA ₆ 44,5	30	86	66	66	89	3	M6x60	25
	48,3	1 1/2"		A ₆ 1 1/2"	MA ₆ 1 1/2"	RA ₆ 1 1/2"	LA ₆ 1 1/2"								
	50,8	2"		A ₆ 50,8	MA ₆ 50,8	RA ₆ 50,8	LA ₆ 50,8								

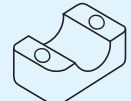
A... = polipropilene / polypropylene* MA... = polyamide / self-extinguishing RA... = gomma / rubber LA... = alluminio / aluminium
 ...H = interno liscio / smooth inside (per ordine di collari tipo H, aggiungere H dopo il codice / to order clamps type H, please put the H at the end of the code)



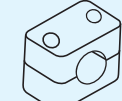
tipo normale
interno sagomato
normal model
profiled inside



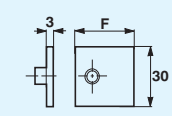
tipo normale
interno sagomato
normal model
profiled inside



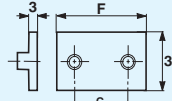
tipo H
interno liscio
H model
smooth inside



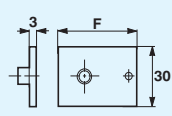
tipo H
interno liscio
H model
smooth inside



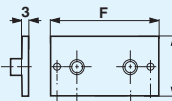
gruppo
group **0**



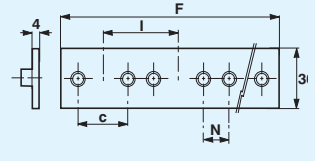
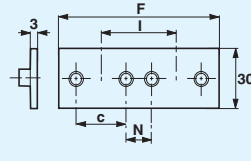
gruppo
group **1 ÷ 6**



gruppo
group **0**

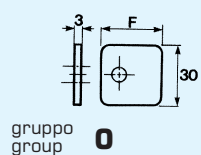


gruppo
group **1 ÷ 6**

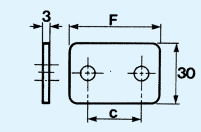


semi-collare clamp-half	coppia collari clamp body (2 halves)	piastra inferiore lower plate		piastra inferiore allungata prolonged lower plate			piastra inferiore doppia double lower plate					piastra inferiore multipla multiple lower plate				
		APIN		APIA			APID					APIM				
A....S	A....C	F mm	c mm	F mm	c mm	d mm	F mm	c mm	N mm	I mm	n° collari clamps	F mm	c mm	N mm	I mm	n° collari clamps
A ₀ 06 S	A ₀ 06 C	APIN₀		APIA₀			APID₀					APIM₀				
A ₀ 08 S	A ₀ 08 C															
A ₀ 10 S	A ₀ 10 C	31,5	-	46	-	-	63	-	-	30	2	315	-	-	30	10
A ₀ 12 S	A ₀ 12 C															
A ₁ 06 S	A ₁ 06 C	APIN₁		APIA₁			APID₁					APIM₁				
A ₁ 6,4 S	A ₁ 6,4 C															
A ₁ 08 S	A ₁ 08 C															
A ₁ 9,5 S	A ₁ 9,5 C	41	20	64	20	51	82	20	20	40	2	410	20	20	40	10
A ₁ 10 S	A ₁ 10 C															
A ₁ 12 S	A ₁ 12 C															
A ₂ 12,7 S	A ₂ 12,7	APIN₂		APIA₂			APID₂					APIM₂				
A ₂ 1/4" S	A ₂ 1/4" C															
A ₂ 14 S	A ₂ 14 C															
A ₂ 15 S	A ₂ 15 C															
A ₂ 16 S	A ₂ 16 C	46	26	70	26	56	92	26	18	44	2	460	26	18	44	10
A ₂ 3/8" S	A ₂ 3/8" C															
A ₂ 18 S	A ₂ 18 C															
A ₂ 19 S	A ₂ 19 C															
A ₃ 19 S	A ₃ 19 C	APIN₃		APIA₃			APID₃					APIM₃				
A ₃ 20 S	A ₃ 20 C															
A ₃ 1/2" S	A ₃ 1/2" C															
A ₃ 22 S	A ₃ 22 C	54	33	78	33	64	108	33	19	52	2	540	33	19	52	10
A ₃ 25 S	A ₃ 25 C															
A ₃ 25,4 S	A ₃ 25,4 C															
A ₄ 3/4" S	A ₄ 3/4" C	APIN₄		APIA₄			APID₄					APIM₄				
A ₄ 28 S	A ₄ 28 C															
A ₄ 30 S	A ₄ 30 C	61	40	86	40	71	122	40	20	60	2	305	40	20	60	5
A ₄ 32 S	A ₄ 32 C															
A ₅ 32 S	A ₅ 32 C	APIN₅		APIA₅			APID₅					APIM₅				
A ₅ 1" S	A ₅ 1" C															
A ₅ 35 S	A ₅ 35 C															
A ₅ 38 S	A ₅ 38 C															
A ₅ 40 S	A ₅ 40 C	73	52	97	52	83	146	52	23	75	2	365	52	23	75	5
A ₅ 42 S	A ₅ 42 C															
A ₅ 1 1/4" S	A ₅ 1 1/4" C															
A ₅ 45 S	A ₅ 45 C															
A ₆ 44,5 S	A ₆ 44,5 C	APIN₆		APIA₆			APID₆					APIM₆				
A ₆ 1 1/2" S	A ₆ 1 1/2" C															
A ₆ 50,8 S	A ₆ 50,8 C	89	66	112	66	100	178	66	24	90	2	445	66	24	90	5

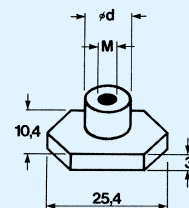
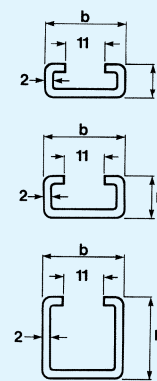
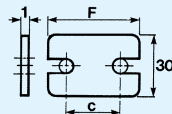
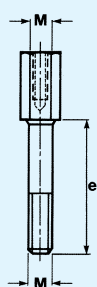
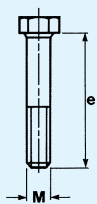
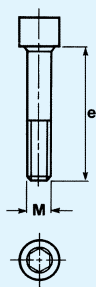
* La produzione standard è di colore verde, colore nero su richiesta.
 Standard production in green, black color on request.



gruppo **0**



gruppo **1 ÷ 6**



piastra superiore upper plate	vite a testa tonda esagono interno T.C.E.I. screws	vite a testa esagonale hexagonal head screw	vite a testa esag. allungata high hexeg. head screw	piastra superiore di sicurezza security upper plate	binari portanti spessore 2 mm rail	dado esagonale fissaggio binari hexagonal nut		
APS	AVTC	AVTE	AVTEA	APMRS	ABINS	ADES		
F mm	c mm	M	e mm	M	e mm	M	ø d mm	
APS₀	AVTC₀	AVTE₀	AVTEA₀	APMRS₀	ABINS-1	ADES		
28	—	M6 20	M6 30	M6 20			28	—
APS₁	AVTC₁	AVTE₁	AVTEA₁	APMRS₁			28	11
37	20	M6 20	M6 30	M6 20	34	20		
APS₂	AVTC₂	AVTE₂	AVTEA₂	APMRS₂	ABINS-2	ADES		
43	26	M6 25	M6 35	M6 25			41	26
APS₃	AVTC₃	AVTE₃	AVTEA₃	APMRS₃	ABINS-3	ADES		
50	33	M6 30	M6 40	M6 30			47	33
APS₄	AVTC₄	AVTE₄	AVTEA₄	APMRS₄	ABINS-3	ADES		
57	40	M6 35	M6 45	M6 35			57	40
APS₅	AVTC₅	AVTE₅	AVTEA₅	APMRS₅	ABINS-3	ADES		
69	52	M6 50	M6 60	M6 50			67	52
APS₆	AVTC₆	AVTE₆	AVTEA₆	APMRS₆	ABINS-3	ADES		
83	66	M6 60	M6 70	M6 60			82	66

* Altre piastre speciali sono a pag. 20
Other special plate are at page 20